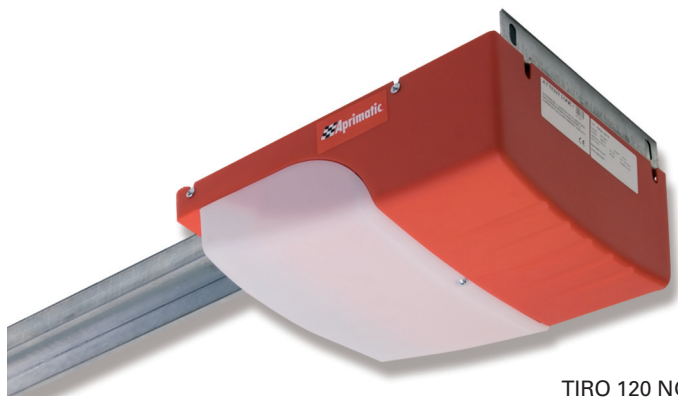




APRIBOX - TIRO NG



Low-voltage electro-mechanical operator
for sectional and counterweight, up-and-over, garage doors.
Residential use.



TIRO 120 NG

■ **Controlled slowdown system** for gradual approach at the end of opening and closing movements, preventing banging and unnecessary structural stress.

■ **Maximum anti-crush safety** is ensured by an on-board electronic control unit with auto-reverse on collision with any obstacle.

■ **KIT APRIBOX 800 and TIRO 120 NG** can also be used to automate counterweight, up-and-over, doors if installed with curved arms.

■ **Timed courtesy light** incorporated in the operator to light the garage during door opening and closing.

■ **Chain drive** guarantees excellent reliability and wear resistance.

■ All models include a standard release device.

TECHNICAL DATA	APRIBOX 600	APRIBOX 800	TIRO 120 NG
POWER SUPPLY	230 V - 50/60 Hz	230 V - 50/60 Hz	230 V - 50/60 Hz
MOTOR POWER SUPPLY	24 Vdc	24 Vdc	24 Vdc
ABSORBED POWER	100 W	100 W	110 W
FORCE APPLIED	600 N	800 N	1200 N
OPERATING TEMPERATURE	-20°C to +60°C	-20°C to +60°C	-20°C to +60°C
LINEAR SPEED	20 cm/sec.	20 cm/sec.	14 cm/sec.
DRIVE	Chain	Chain	Chain
TOTAL LENGTH	3210	3210	3210
USEFUL TRAVEL (3 m Guide)	2400 mm	2550 mm	2550mm
MIN. INSTAL. DISTANCE	35mm	35mm	35mm
MAX. DOOR DIMENSION	8 m ²	10 m ²	14 m ²
WEIGHT	Approx 18 kg	Approx 18 kg	Approx 20 kg